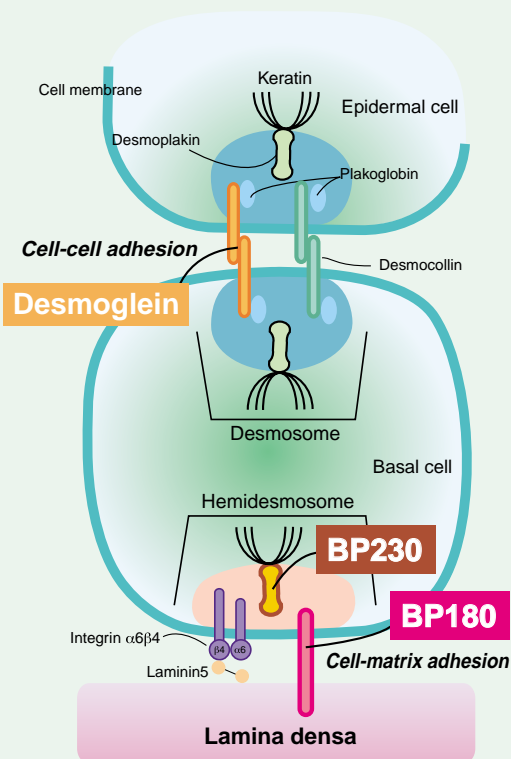


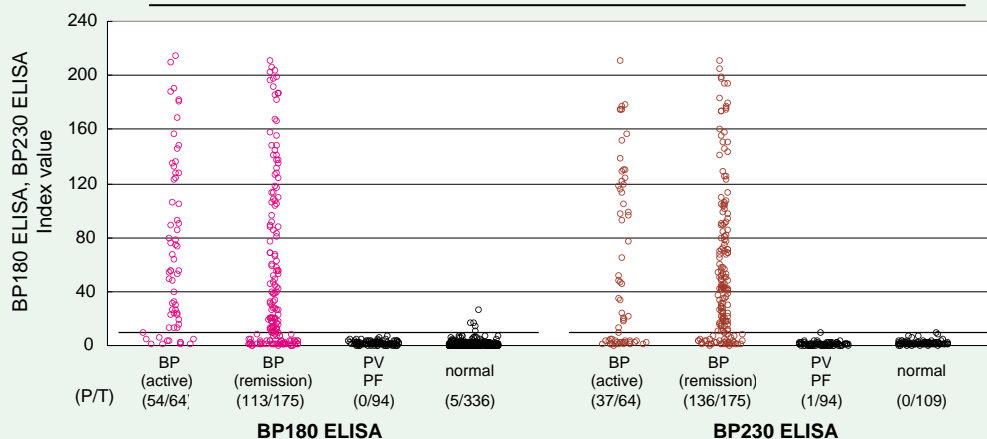


BP180 & BP230 ELISAs

- ★ Detection of Autoantibodies against BP180 & BP230
- ★ Semi-quantitative ELISA
- ★ >98% Specificity and Sensitivity in combined assays



Anti-BP180, BP230 IgG autoantibody titers by ELISA



BP: Bullous pemphigoid, PV: Pemphigus vulgaris, PF: Pemphigus foliaceus

Sensitivity of BP180 & BP230 ELISA

	BP Active (n=64)	BP Remission (n=175)	BP Total (n=239)
BP180 Positive	84% (54/64)	65% (113/175)	70% (167/239)
BP230 Positive	64% (41/64)	79% (138/175)	75% (179/239)
BP180+BP230 Positive	95% (61/64)	99% (173/175)	98% (234/239)

Product	Product #	Volume
BP180 ELISA	RG-7612E-D	48 wells
BP230 ELISA	RG-7613E-D	48 wells

Products and Solutions to Advance Scientific Discoveries[®]

MBL[®] International Corporation